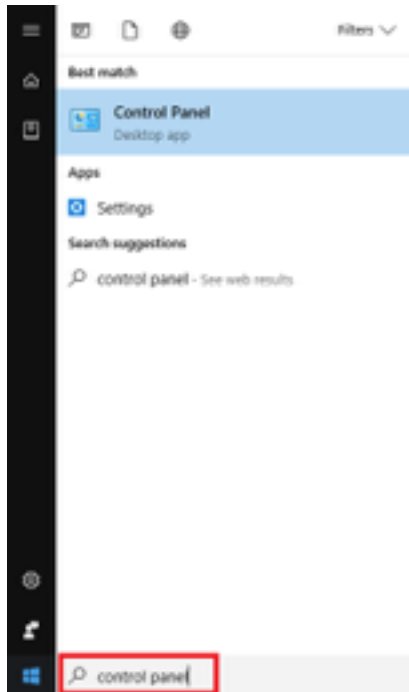


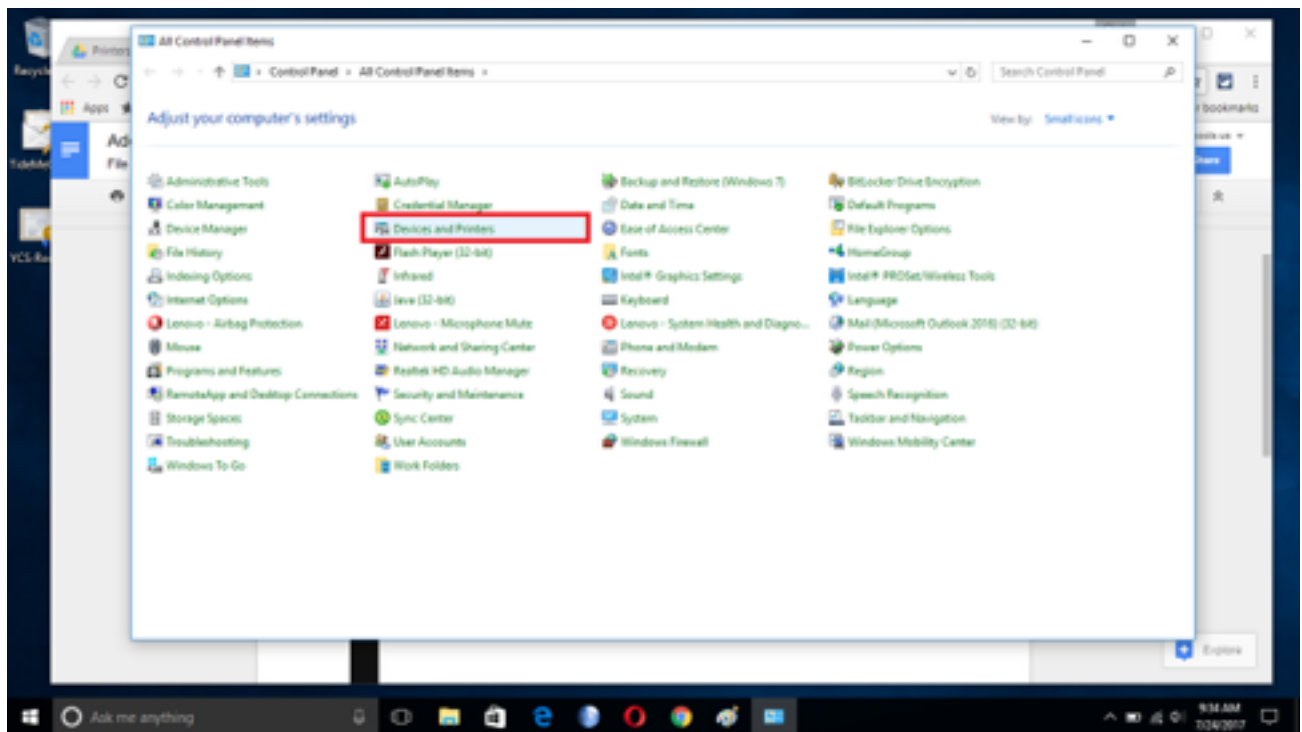
Adding a Canon Printer (Windows 10)

As of June 30, 2017, our contract with Konica-Minolta Business Systems expired. As a result, the older Konica printers/copiers have been removed, and replaced by Canon printers/copiers. Here are the steps to adding and configuring the correct Canon printer driver for your Windows 10 PC:

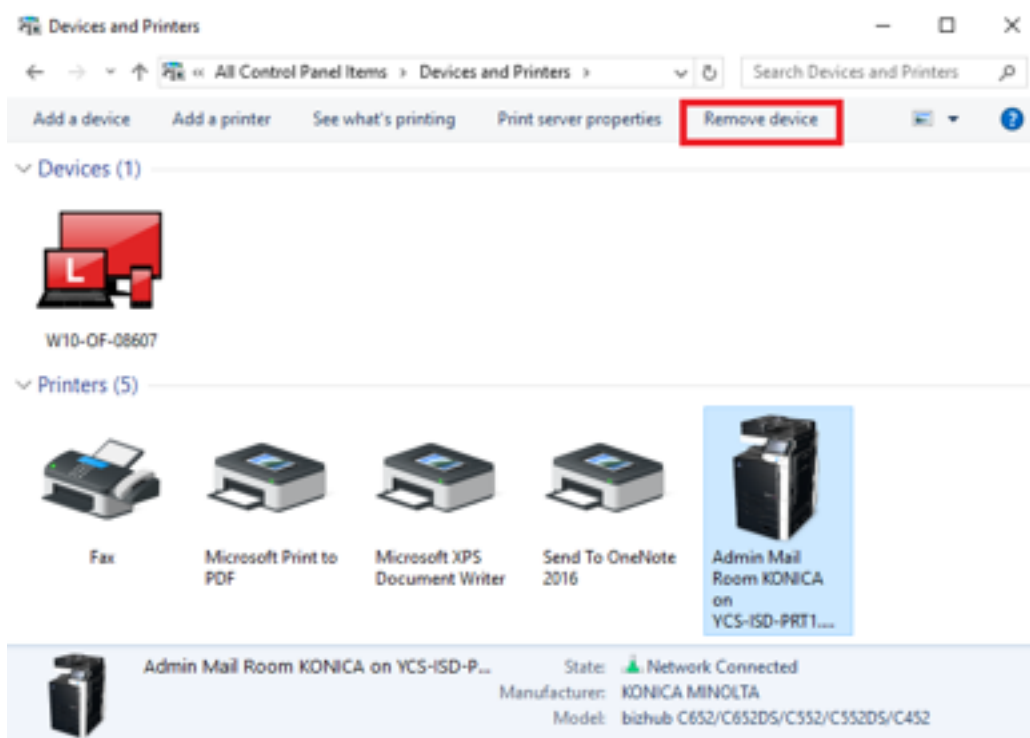
- i. Click on the Windows icon in the lower left corner, type control panel in the search box, and then click the Control Panel Desktop App to launch



ii. Click Devices and Printers



iii. If you see any printers named Konica in your list, click and select Remove device for each, in turn



iv. Find the Canon printer you would like to use on this spreadsheet: <https://goo.gl/ReSF5N>. You will need the information from that line to add and configure the printer

- v. In your browser, visit this link: <https://goo.gl/FfNRRb> then click SELECT on the most up-to-date recommended Generic_Plus_UFRII driver

Canon SEE IMPOSSIBLE EXPLORE PRODUCTS SUPPORT ABOUT SHOP CHOOSE A SEARCH AREA

Drivers & Downloads

Operating System: Windows 10 (x64) (Detected) Language: English

Drivers Software Firmware Utilities SDK

File Name	Date	File Size	
Generic_Plus_UFRII_v1.01_Setup_x64.exe	07/19/17	21.8 MB	SELECT
UFRII_v3015_Setup_x64.exe	07/11/17	23.8 MB	SELECT

- vi. Click on the DOWNLOAD icon, and if asked, keep the file

Canon SEE IMPOSSIBLE EXPLORE PRODUCTS SUPPORT ABOUT SHOP CHOOSE A SEARCH AREA

Home / Support / Copiers / MFPs / Fax Machines / Multifunction Copiers / **imageRUNNER ADVANCE 4545i**

Operating System: Windows 10 (x64) (Detected) Language: English

Drivers Software Firmware Utilities SDK

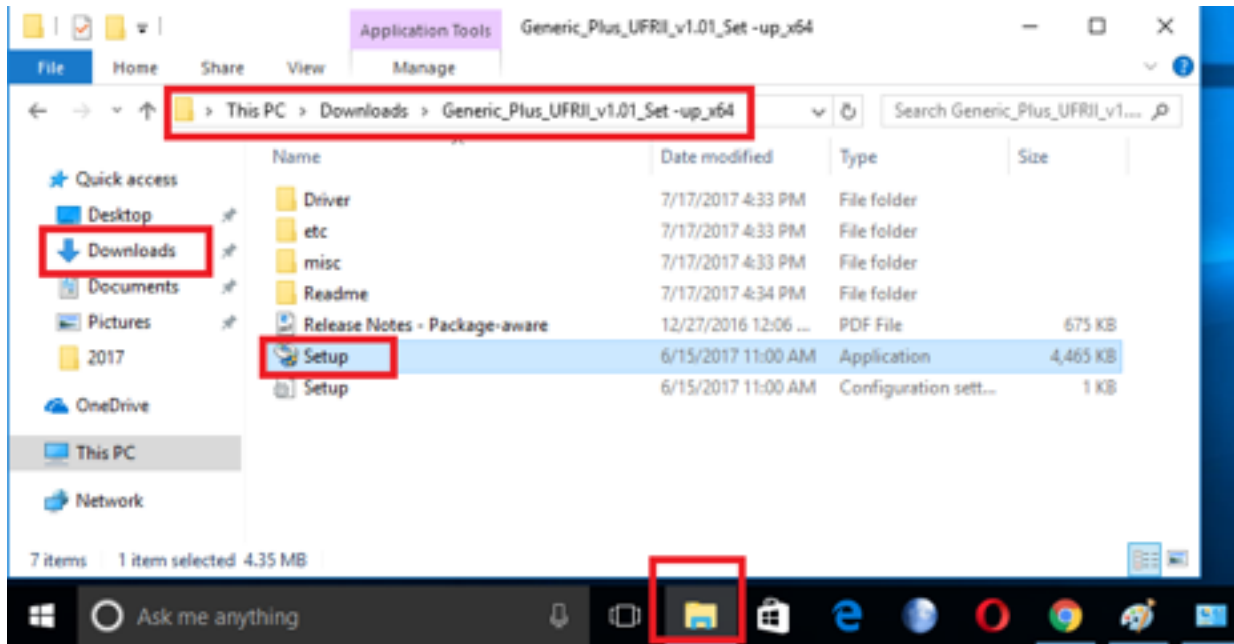
File Name	Date	File Size	
Generic_Plus_UFRII_v1.01_Setup_x64.exe	07/19/17	21.8 MB	CLOSE

Generic Plus UFRII Printer Driver v1.01 Setup Installer for Windows Vista/Windows 7/Windows 8/Windows 8.1/Windows 10/Server 2008/Server 2008 R2/Server 2012/Server 2012/Server 2012 R2 x64
PACKAGE-AWARE PRINT DRIVER - PLEASE READ 'RELEASE NOTES' BEFORE INSTALLING THIS DRIVER ON A PRINT SERVER

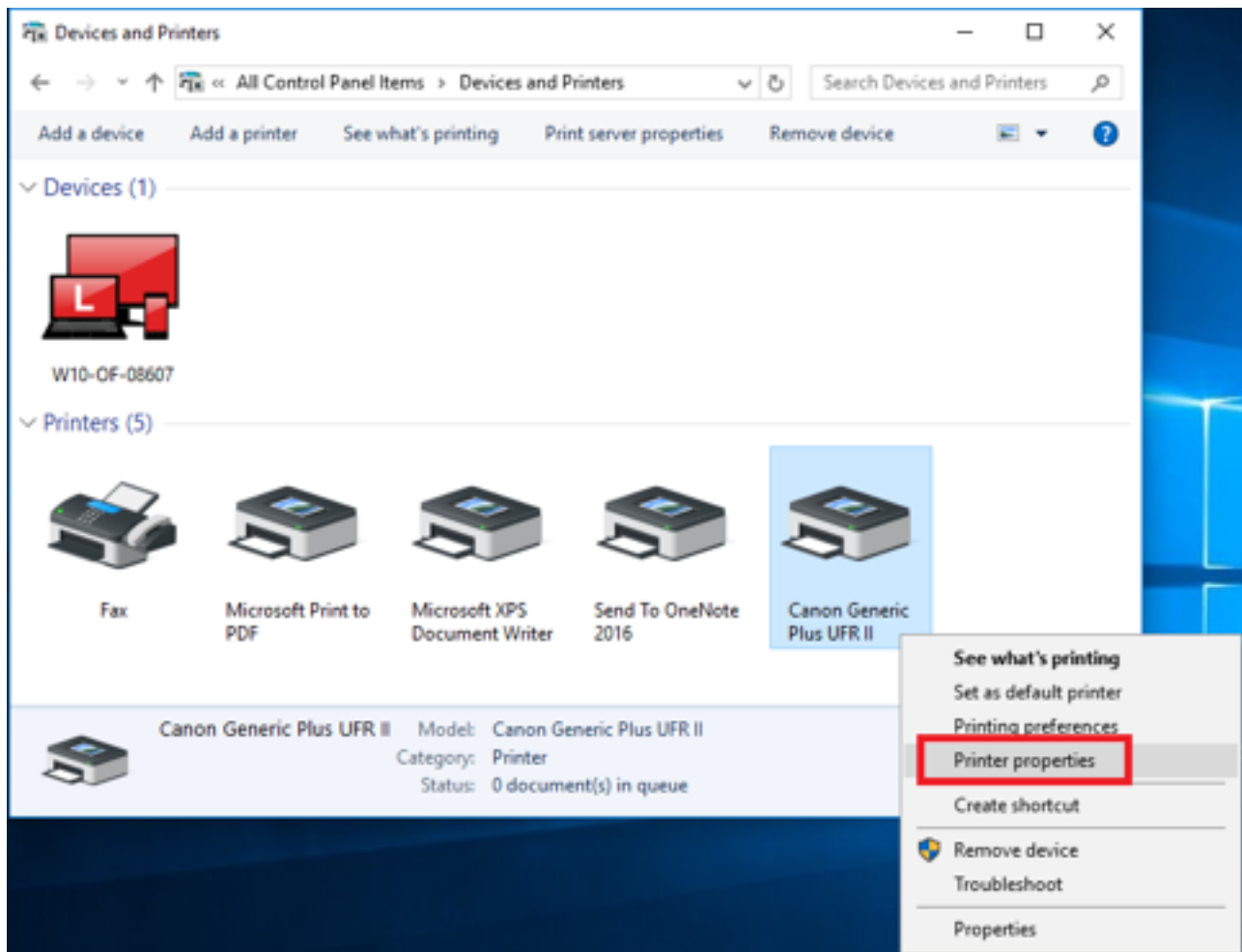
File name: Generic_Plus_UFRII_v1.01_Setup_x64.exe Supporting Documents: **DOWNLOAD**

- vii. Click the self-extracting archive file to extract it in your Downloads folder

- viii. Click on the folder icon in the Windows taskbar, then Downloads, then the Generic_Plus_UFRII driver folder, then the Setup Application



- ix. Follow the first few driver installation prompts, most likely Next >, Yes, then choose the Custom radio button, then Next >, Next >
- x. At the Printer Information prompt, click Add Port... and Standard TCP/IP Port, then OK
- xi. Follow the first few installation prompts, most likely Next >, and type in the IP address (column H) for your printer of choice, and click Next >, then Finish. This should bring you back to the driver installation prompts
- xii. In the driver installation prompts, Click Next >, Start, and let it install the printer driver
- xiii. When the installation finishes, make sure the box next to Restart My Computer Now is unchecked, then click Exit
- xiv. Back in the Devices and Printers Control Panel window, right click on the new Canon printer (probably called Canon Generic Plus UFR II), and choose Printer properties



- xv. Under the General tab, rename the printer as something that you will be able to recognize (suggested name is the Network Name in the spreadsheet (column N)), and click OK
- xvi. In the Devices and Printers Control Panel window, right click on the new Canon printer, and choose Set as default printer



This file is available at <https://goo.gl/KDjFfa>